



# **Waste Management Plan**

**Request for Project  
2025 / 2026**

Submitted to

**GUJRANWALA WASTE  
MANAGEMENT COMPANY**

Submitted By

**AL KISWA Water & Environment  
Research Initiatives**

**Contact Information**

Shayan Jamil

[sjamil@alkew.ca](mailto:sjamil@alkew.ca)

+92-3324472387

# RESIDENTIAL WASTE MANAGEMENT PLAN

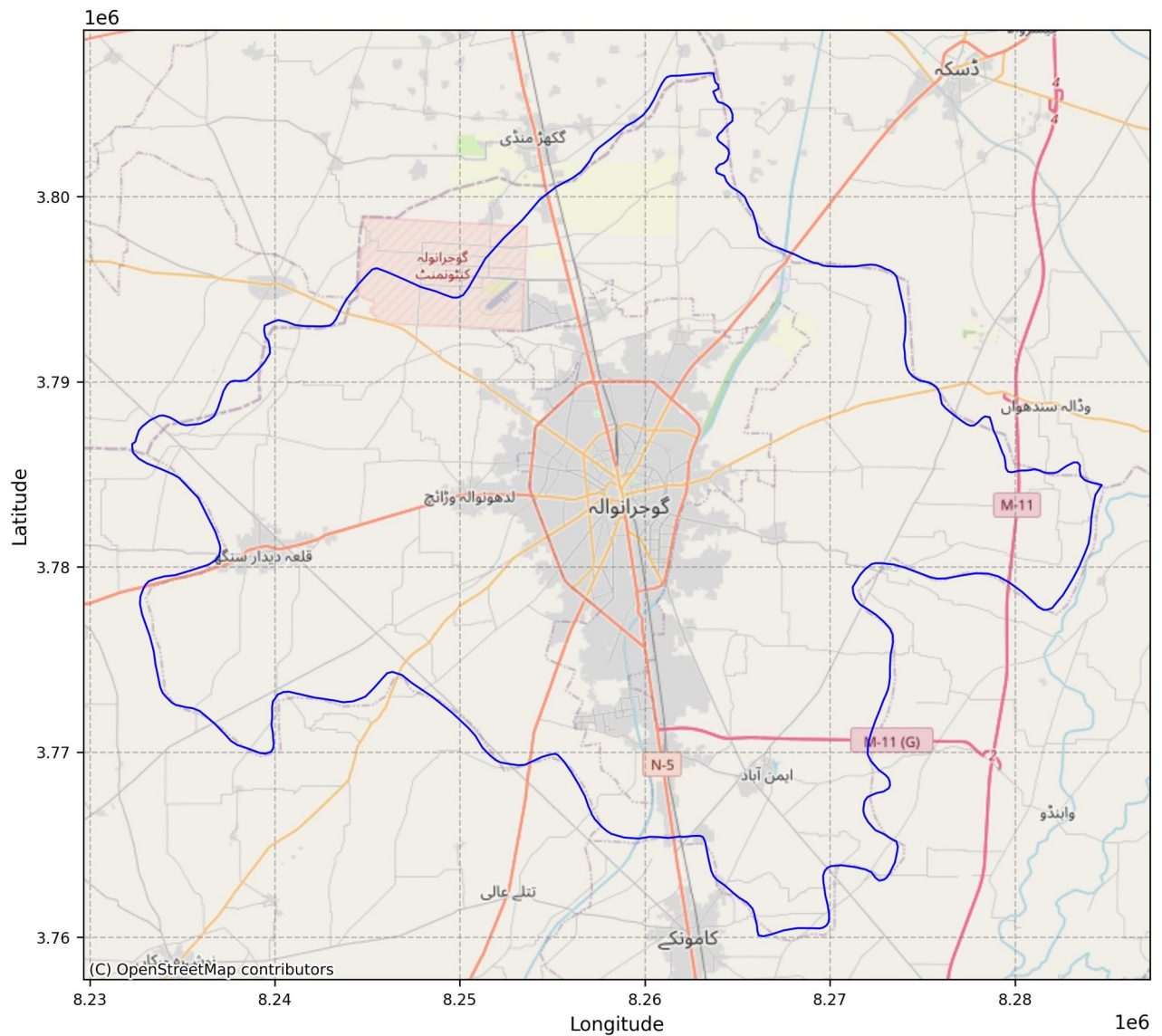
## **When is this document used?**

This document may be used to assist in putting together a Waste Management Plan (WMP) for **small residential development** planning applications. This document contains instructions and a template form for both the residential and commercial components of the development.

## **What is the purpose of a Waste Management Plan?**

To support circular economy which diverts waste from landfill and reuses resources. The goal is to improve waste management, including reducing the number of truck movements and bins in public areas. A WMP helps developers to ensure that appropriate and sustainable provision is made for the separation, storage and collection of waste.

Figure 1: Geographic boundary of Gujranwala district located adjacent to the Lahore city, located in the province of Punjab, Pakistan. Data source: <https://gujranwaladivision.punjab.gov.pk>



## **WHAT WILL BE SUBMITTED AS PART OF A WASTE MANAGEMENT PLAN?**

- Critical SWM sites such as transfer stations, temporary collection points (TCPs), dumping sites, workshops, and parking lots to gather primary data
- Gathered primary data on human resources (HR), equipment inventory, expenditures, population demographics & daily waste generation rates
- Thorough gap analysis to identify shortcomings in the current SWM systems
- Coordinates of existing SWM infrastructure/sites to map their distribution and condition
- Primary and secondary data to determine additional resources needed to optimize waste management operations in each UC
- A tailored SWM plans for all the Union Councils in Gujranwala district
- Establish mechanisms for continuous monitoring and evaluation to assess the effectiveness of implemented SWM strategies

# PROCESS FLOW FOR RESIDENTIAL WASTE MANAGEMENT PLANNING

**STEP 1: Estimate the volume of waste that the residences will produce weekly**

**STEP 2: Analyse the existing waste collection process**

**STEP 3: Determine the size and number of residential bins.**

**STEP 4: Decide where waste will be stored and collected from.**

**STEP 5: Prepare plan drawings to present the entire waste collection program**

Figure 2: Process flow for residential waste management planning in Punjab, Pakistan

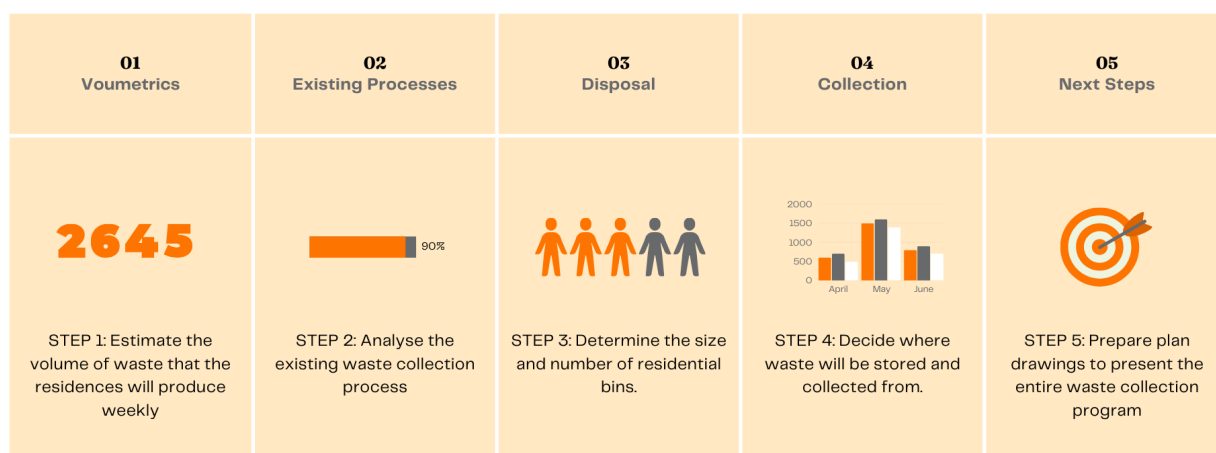


Figure 3: Example plan drawing of a small residential development, showing future bin storage, drawn to scale, at the main location of the site / ward / UC.



# DATA COLLECTION FOR RESIDENTIAL WASTE MANAGEMENT PLANNING

<b>Waste Management Plan: Data Collection Form</b>	
--	--

<b>Site / Ward / UC:</b>	
<b>Reference Address:</b>	
<b>Number of Houses:</b>	
<b>Current Residential Waste Collection Service:</b>	
<b>Collection frequency, number and size of residential bins:</b>	
<b>Local Waste Collection Bin Location</b>	
<b>Waste vehicle stopping location for collection of bins</b>	
<b>Waste vehicle stopping location for collection of bins</b>	
<b>Waste collection contractor company</b>	

**Data Collected by:** .....

**Dated:** .....